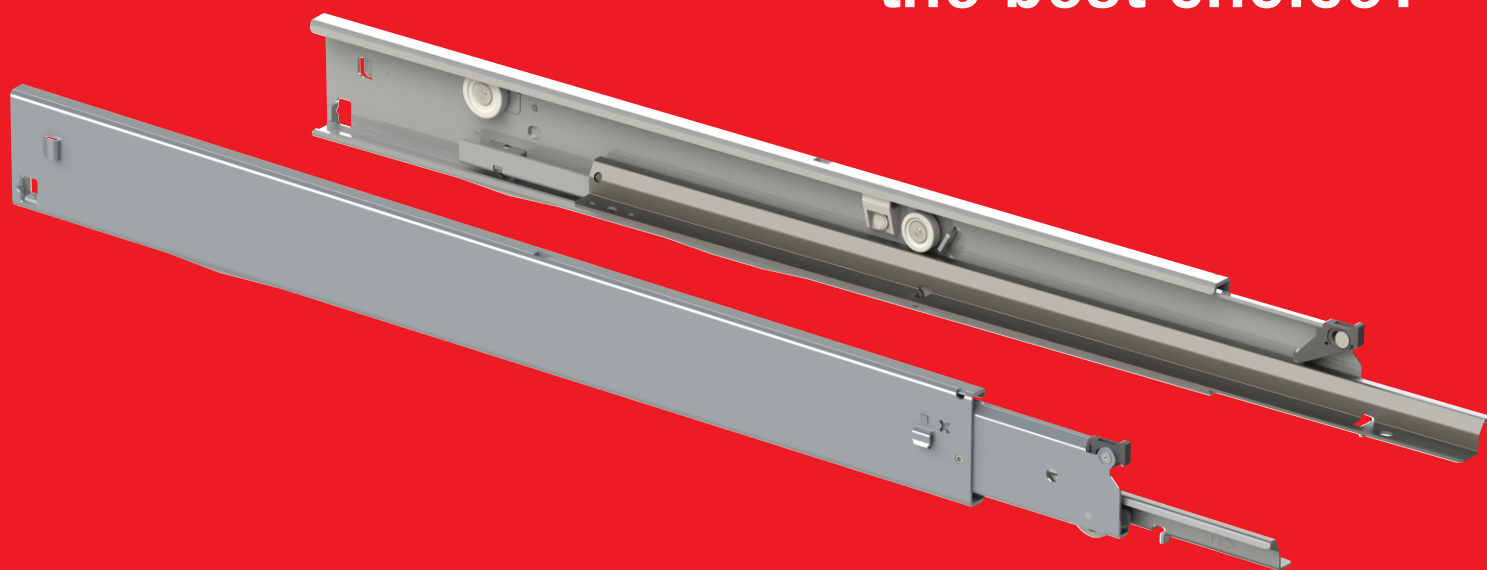


Why are Fulterer drawer slides
the best choice?



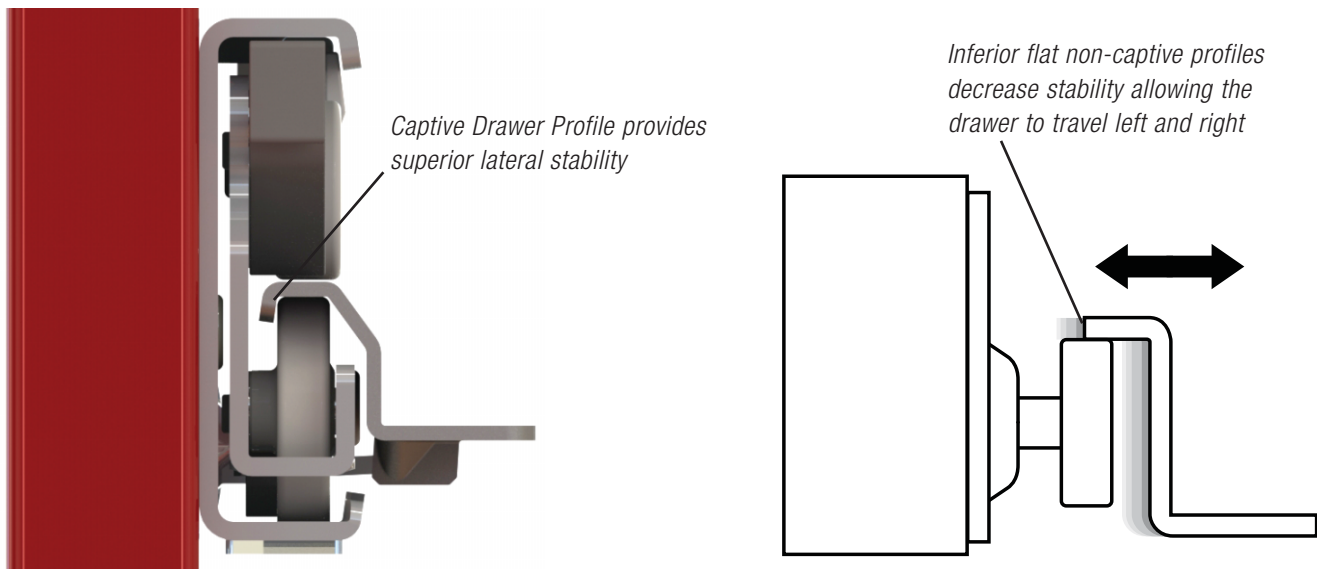
Fulterer
DRAWER SLIDE SYSTEMS

Fulterer's captive drawer profiles provide more stability than obsolete flat profiles.

Captive Drawer Profile

Our exclusive feature on heavy duty slides is the Fulterer **captive drawer profile** technology where the profiles partially wrap around the rollers. This feature gives the slide much more lateral stability as opposed to flat non-captive profiles. Captive drawer profiles eliminate the otherwise necessary but very restricting middle drawer runner cage created by adding a brace between the two middle profiles.

In addition, our **captive drawer profile** decreases racking and eliminates jamming caused when opening and closing the drawer off center. Even when operated from the far outer edges of the drawers, Fulterer slides close easily and do not jam.



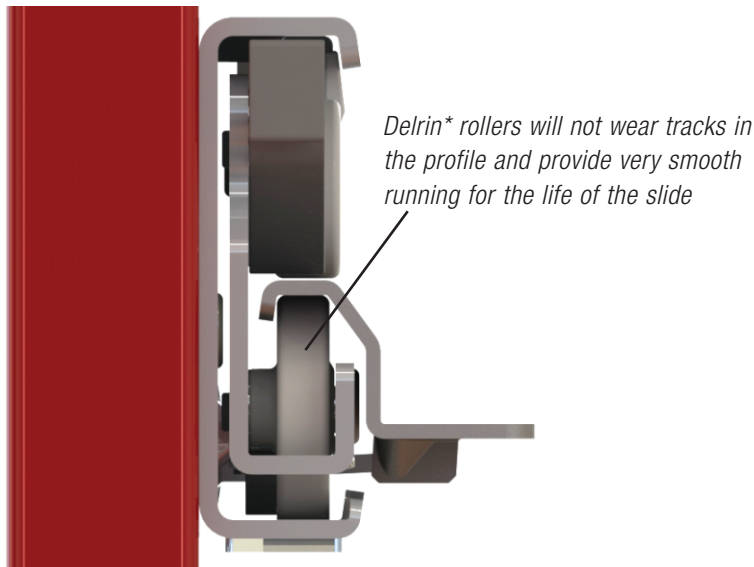
Advantages of Captive Profile:

- ▶ Fulterer's captive drawer profiles provide more stability than obsolete flat profiles.
- ▶ Captive drawer profiles eliminate the need for cross-brace on the drawer.
"If your drawer has a brace, you're behind in the race"
- ▶ Stamped profiles and automated assembly assure consistency and reliability.
- ▶ Limited lifetime warranty on Fulterer slides means no worries.
- ▶ Fulterer middle profiles contain all the moving parts of the slide and are easy to replace without damage to the drawer or the cabinet.

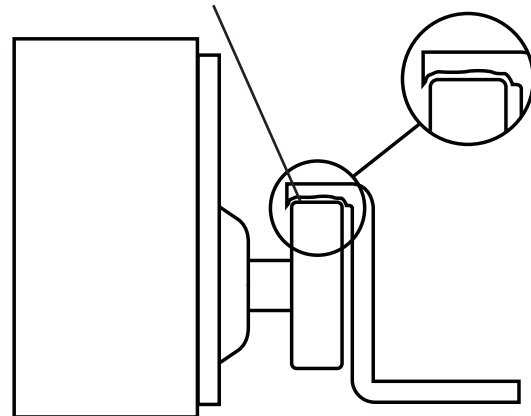
Fulterer uses a Delrin* roller composition improving the running ability of the drawer.

Superior Delrin rollers

Fulterer uses a **Delrin*** roller composition improving the running ability of the drawer and eliminating walking and wearing of the profiles caused due to the friction of steel on steel. Our **Delrin*** rollers increase the performance and the lifetime of the slide exponentially.



Steel rollers on steel profile results in wearing of tracks in the profile over time due to the friction of steel on steel



Advantages of Delrin* rollers:

- ▶ High tensile strength
- ▶ High shock resistance
- ▶ High dimensional consistency
- ▶ Stability-no property changes due to aging
- ▶ Self-lubricating
- ▶ Temperature resistant from - 20°C to +80°C
- ▶ Dishwasher safe
- ▶ Acid and Base resistant
- ▶ High dynamic weight capacity
- ▶ Quiet running qualities
- ▶ Does not grind into the slide as steel rollers may do over time
- ▶ Delrin* is the material of choice for our rollers used on our slides
FR7180 FR7100, FR790/791, FR215 and other products.

Disadvantages of Steel rollers:

- ▶ Steel rollers and steel profiles will cause either the roller to wear or the roller will wear a groove in the profile, resulting in eventual replacement.
- ▶ For a welded drawer, replacement can be a time consuming process.

Quality Assurance

Fulterer's state-of-the-art production and stamping technology assures quality consistency unmatched by others guaranteeing 100% quality consistency. Fulterer offers a **Limited Lifetime Warranty**.

**LIMITED
LIFETIME
WARRANTY**

Fulterer

*DuPont (TM) Delrin®

FULTERER USA INC.
542 Townsend Avenue
High Point, NC
27263-4552, USA

T +1 336 431 - 4646
T +1 800 395 - 4646
F +1 336 431 - 4620
info@fultererusa.com
www.fultererusa.com

FULTERER USA INC.
1900 Proforma Avenue, Unit F-2
Ontario, CA
91761, USA

T +1 909 947 - 0407
F +1 909 947 - 0409
info@fultererusa.com
www.fultererusa.com

Fulterer
DRAWER SLIDE SYSTEMS