

FR 5001.ECD.SMT

| | |
|--------------------|--|
| SLIDE TYPE: | Full-Extension Ball Bearing Drawer Slide - with Easy Close Device, Standard Mounting Tab |
| MOUNTING: | Side Mount |

| | |
|-----------------------|--------------------------------|
| WIDTH: | 12.3 mm (0.48 in.) |
| LOAD CAPACITY: | dynamic up to 45 kg (100 lbs.) |

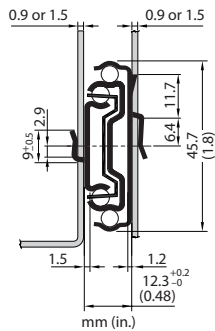
New Product
Please inquire for lead time



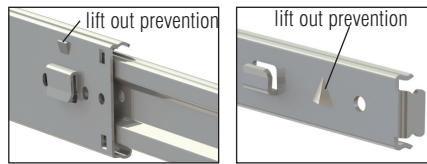
ECD mechanism provides self-closing and impact absorbing soft-close feature.



| | | | |
|-------------------|-------------------|------------------|---------------------|
| MATERIALS: | cold rolled steel | FEATURES: | steel ball bearings |
|-------------------|-------------------|------------------|---------------------|



12.3 mm (0.48 in.) is the actual size of the slide. Allow a min. of 12.8 mm (0.50 in.) for clearance and a maximum of 13.0 mm (0.51 in.).

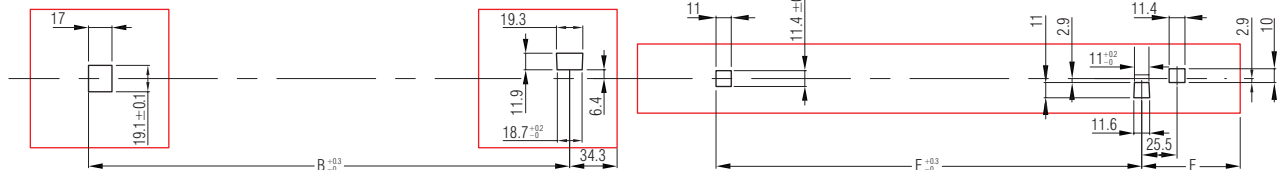


- SPECIFICATIONS:**
- ▶ Standard Mounting Tab system allows for fast and easy mounting of slide to cabinet and drawer to slide
 - ▶ precision ball bearing drawer slide for medium-duty applications
 - ▶ drawer profile features an easy to operate disconnect finger release trigger
 - ▶ ECD Easy Close Device
 - ▶ lift out prevention

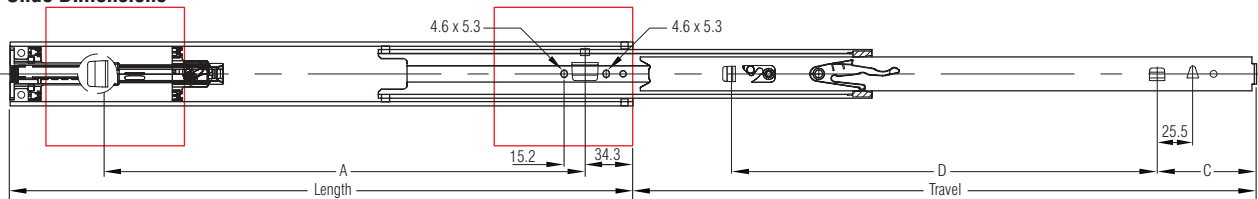
CAUTION:

- ▶ We do not recommend this slide to be used on drawers over 27 inches in width. Use FR 5050.ECD.SMT or FR 5210.ECD.SMT for drawers that exceed 27 inches in width.

Installation Dimensions



Slide Dimensions



| Length | Travel | Cabinet Profile: | | | | Drawer Profile: | | | | Weight | Order No. | Order No. | | | | | | |
|--------|--------|------------------|-------|-------|-------|-----------------|-------|-------|------|--------|-----------|-----------|------------------------|-----------------------|-------|---|---|---|
| | | A | B | C | D | E | F | kg. | lbs. | | | | 1.5mm 16ga. steel zinc | .9mm 20ga. steel zinc | | | | |
| 300 | 11.81 | 221.0 | 8.70 | 221.0 | 8.70 | 58.4 | 2.30 | 215.0 | 8.47 | 58.4 | 2.30 | 215.0 | 8.47 | * | * | * | | |
| 355 | 13.98 | 350 | 13.78 | 241.3 | 9.50 | 241.3 | 9.50 | 58.4 | 2.30 | 241.3 | 9.50 | 58.4 | 2.30 | 241.3 | 9.50 | * | * | * |
| 405 | 15.95 | 400 | 15.75 | 317.5 | 12.50 | 317.5 | 12.50 | 58.4 | 2.30 | 273.0 | 10.75 | 58.4 | 2.30 | 273.0 | 10.75 | * | * | * |
| 450 | 17.72 | 450 | 17.72 | 347.5 | 13.68 | 347.5 | 13.68 | 71.1 | 2.80 | 307.5 | 12.12 | 71.1 | 2.80 | 307.5 | 12.12 | * | * | * |
| 500 | 19.69 | 500 | 19.69 | 393.7 | 15.50 | 393.7 | 15.50 | 58.4 | 2.30 | 370.0 | 14.57 | 58.4 | 2.30 | 370.0 | 14.57 | * | * | * |
| 550 | 21.66 | 550 | 21.66 | 445.0 | 17.52 | 445.0 | 17.52 | 83.8 | 3.30 | 393.7 | 15.50 | 83.8 | 3.30 | 393.7 | 15.50 | * | * | * |
| 600 | 23.62 | 600 | 23.62 | 393.7 | 15.50 | 393.7 | 15.50 | 109.2 | 4.30 | 420.0 | 16.54 | 109.2 | 4.30 | 420.0 | 16.54 | * | * | * |
| 650 | 25.59 | 650 | 25.59 | 393.7 | 15.50 | 393.7 | 15.50 | 134.6 | 5.30 | 393.7 | 15.50 | 134.6 | 5.30 | 393.7 | 15.50 | * | * | * |
| 700 | 27.56 | 700 | 27.56 | 393.7 | 15.50 | 393.7 | 15.50 | 160.0 | 6.30 | 393.7 | 15.50 | 160.0 | 6.30 | 393.7 | 15.50 | * | * | * |

Packing Unit: 10 pair per box

*on request