

FR 5609

SLIDE TYPE:	Heavy-Duty Full-Extension Ball Bearing Drawer Slide
MOUNTING:	Side Mount

WIDTH:	19mm (0.75 in.)
LOAD CAPACITY:	dynamic up to 100 kg (225 lbs.)

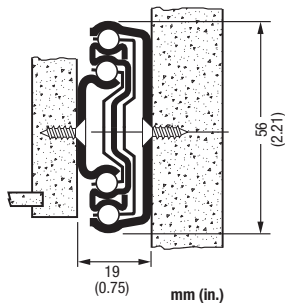


FR 5609 includes a metal disconnect latch

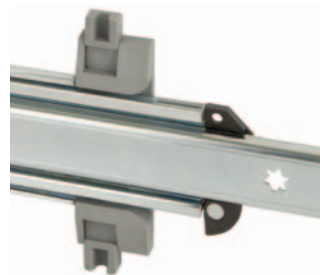
MATERIALS:	cold rolled steel
-------------------	-------------------

FEATURES:	steel ball bearings
------------------	---------------------

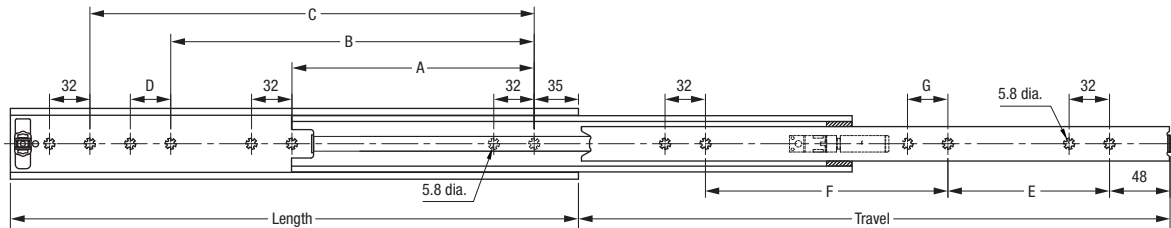
SPECIFICATIONS:	<ul style="list-style-type: none"> ▶ precision ball bearing drawer slide for heavy-duty usage ▶ telescoping 3-stage design with excellent running qualities ▶ lengths 350-700 mm have standard 25 mm overtravel ▶ drawer slide is non-handed and has a hold close detent ▶ lengths 800mm-1100mm have no overtravel ▶ recommended screws: wood screw #8 or machine screws 8-32. See screws page. ▶ metal disconnect latch standard
------------------------	--



19 mm (0.75 in.) is the actual size of the slide. Allow a min. of 19.1 mm (0.75 in.) for clearance and a maximum of 19.6 mm (0.77 in.).



Also available with anti-tilt mechanism incorporated as FR 5619.



Length	Travel	Cabinet Profile:				Drawer Profile:				Weight	Order No.					
		A	B	C	D	E	F	G	kg.			lbs.	zinc			
350	13.78	375	14.76	160	6.30	256	10.08	32	1.26	96	3.78	128	5.04	*	400849	
400	15.75	425	16.73	224	8.82	320	12.60			128	5.04	128	5.04	*	400850	
450	17.72	475	18.70	224	8.82	352	13.86	32	1.26	160	6.30	160	6.30	*	400851	
500	19.69	525	20.69	224	8.82	384	15.12	32	1.26	192	7.56	160	6.30	*	400852	
550	21.65	575	22.64	224	8.82	448	17.64	32	1.26	224	8.82	192	7.56	*	400853	
600	23.62	625	24.61	224	8.82	480	18.90	32	1.26	224	8.82	224	8.82	32	1.26	400854
650	25.59	675	26.58	224	8.82	352	13.86	544	21.42	256	10.08	256	10.08	32	1.26	400855
700	27.56	725	28.54	224	8.82	352	13.86	576	22.68	256	10.08	288	11.34	32	1.26	400856
750	29.53	750	29.53	224	8.82	448	17.64	608	23.94	256	10.08	352	13.86	32	1.26	400847
800	31.50	800	31.50	224	8.82	448	17.64	672	26.46	288	11.34	352	13.86	*	400857	
850	33.47	850	33.43	224	8.82	480	18.90	736	28.98	288	11.34	416	16.38	32	1.26	*
900	35.43	900	35.43	224	8.82	480	18.90	768	30.24	320	12.60	416	16.38	32	1.26	400858
950	37.40	950	37.40	224	8.82	544	21.42	832	32.76	320	12.60	480	18.90	32	1.26	*
1000	39.37	1000	39.37	224	8.82	544	21.42	832	32.76	384	15.12	480	18.90	32	1.26	400859
1050	41.34	1050	41.34	224	8.82	544	21.42	928	36.54	384	15.12	544	21.42	32	1.26	*
1100	43.31	1100	43.31	224	8.82	576	22.68	960	37.80	416	16.38	544	21.42	32	1.26	400860

Packing Unit: 350mm-450mm 8 pair per box, 500mm-600mm 6 pair per box, 650mm-1100mm 4 pair per box

* on request