

FR 5606

SLIDE TYPE:	Heavy-Duty Full-Extension Ball Bearing Drawer Slide
MOUNTING:	Side Mount

WIDTH:	16.2 mm (0.64 in.)
LOAD CAPACITY:	dynamic up to 100 kg (225 lbs.)

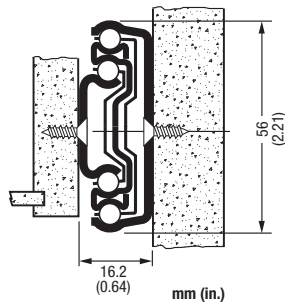
New Product
Please inquire for lead time



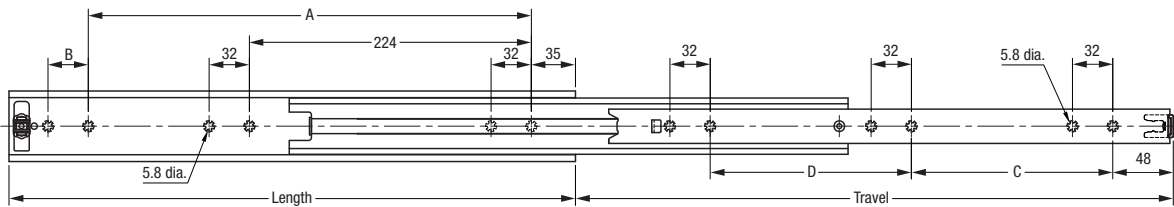
MATERIALS:	cold rolled steel
-------------------	-------------------

FEATURES:	steel ball bearings
------------------	---------------------

SPECIFICATIONS:	<ul style="list-style-type: none"> ▶ precision ball bearing drawer slide for heavy-duty usage ▶ telescoping 3-stage design with excellent running qualities ▶ over -extension of 25 mm (1 in.) is standard ▶ drawer slide is non-handed and has a hold close detent ▶ lengths 400 to 600 mm ▶ non-disconnect drawer profile ▶ recommended screws: wood screw #8 or machine screws 8-32. See screws page.
------------------------	---



16.2 mm (0.64 in.) is the actual size of the slide. Allow a min. of 16.2 mm (0.64 in.) for clearance and a maximum of 16.7 mm (0.66 in.).



Length	Travel	Cabinet Profile:				Drawer Profile:				Weight	Order No.
		A	B	C	D	mm	in	mm	in		
400	15.75	425	16.73	320	12.60	128	5.04	128	5.04	*	*
450	17.72	475	18.70	352	13.86	160	6.30	160	6.30	*	*
500	19.69	525	20.69	384	15.12	192	7.56	160	6.30	*	*
550	21.65	575	22.64	448	17.64	224	8.82	192	7.56	*	*
600	23.62	625	24.61	480	15.90	224	8.82	224	8.82	*	*

Packing Unit: 400mm-450mm 8 pair per box, 500mm-600mm 6 pair per box

* on request