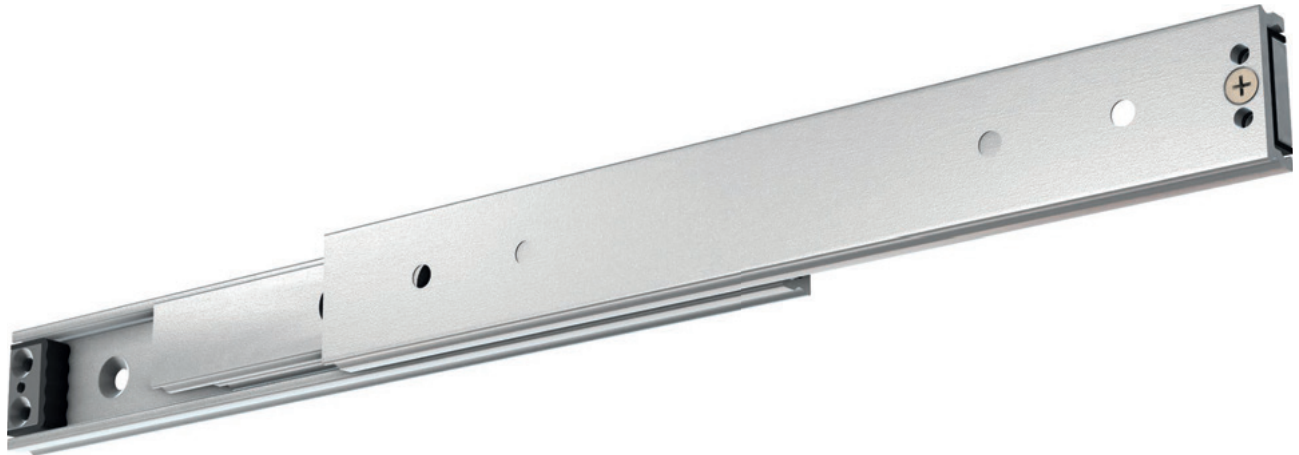







FR 5439 | Full Extension Ball Bearing Slide



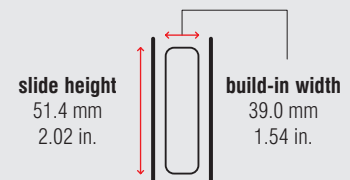
Specifications

-  side mount
-  39.0 mm / 1.54 in.
-  dynamic up to 500 kg / 1,100 lbs.
-  stainless steel ball bearing cages
-  steel, zinc plated

Characteristics

- ball bearing slide for highest load capacities
- symmetrical design
- slides are non-detachable
- applicable for flat-mount installation – reduced load capacity
- synthetic stops

Dimensions



Length		Extension		Weight		Item No.
				per set		zinc plated
mm	inch	mm	inch	kg	lbs.	
400	15.75	400	15.75	8.80	19.40	5643
450	17.72	450	17.72	10.00	22.05	5644
500	19.69	500	19.69	11.20	24.69	5645
550	21.65	550	21.65	12.40	27.34	5646
600	23.62	600	23.62	13.60	29.98	5647
650	25.59	650	25.59	14.80	32.63	5648
700	27.56	700	27.56	16.00	35.27	5649
750	29.53	750	29.53	17.20	37.92	5650
800	31.50	800	31.50	18.40	40.57	5651
850	33.46	850	33.46	19.60	43.21	5652
900	35.43	900	35.43	20.80	45.86	5653
950	37.40	950	37.40	22.00	48.50	5654
1,000	39.37	1,000	39.37	23.30	51.37	5655

Packing Unit – Sets per Box, all Lengths: 1