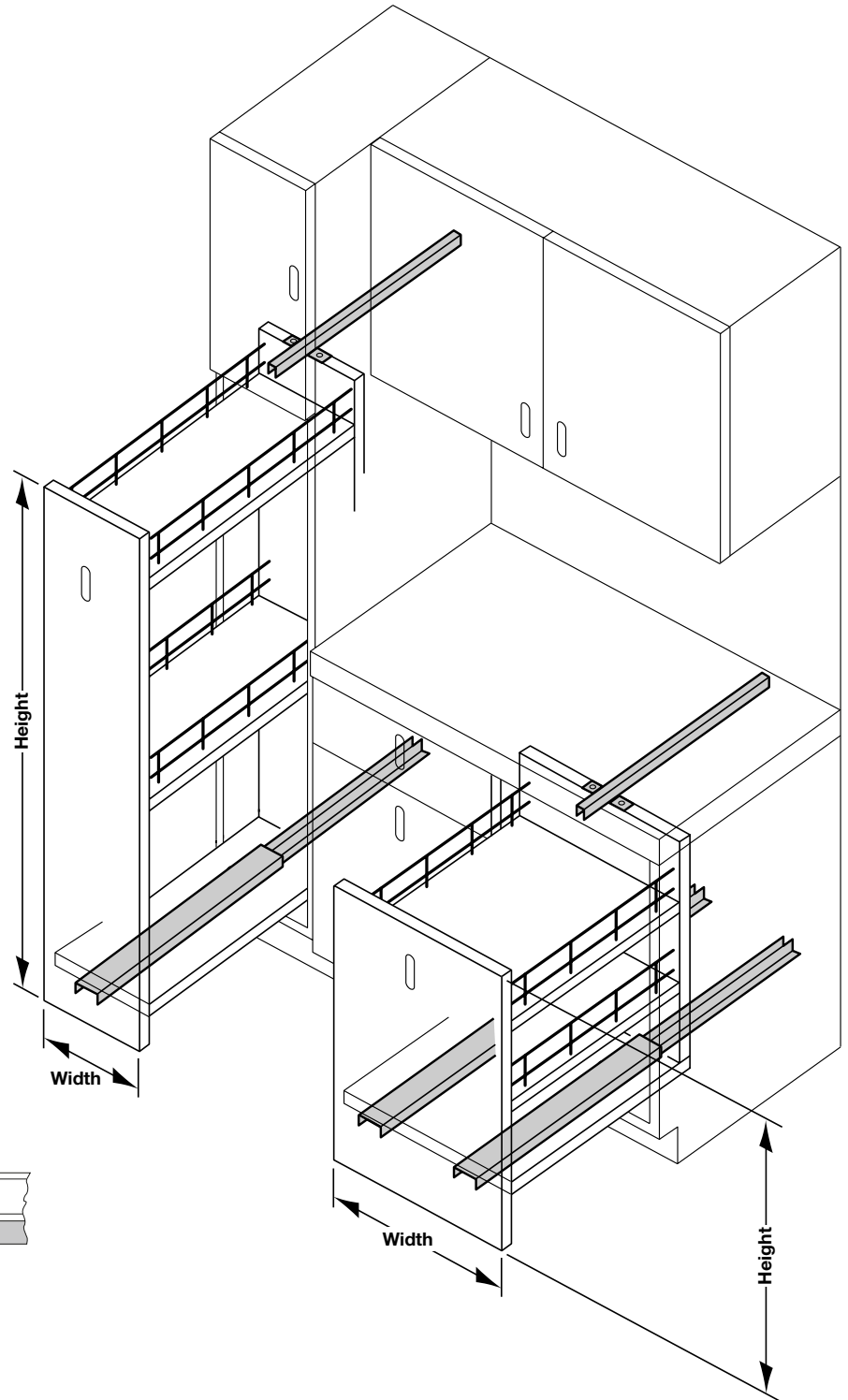
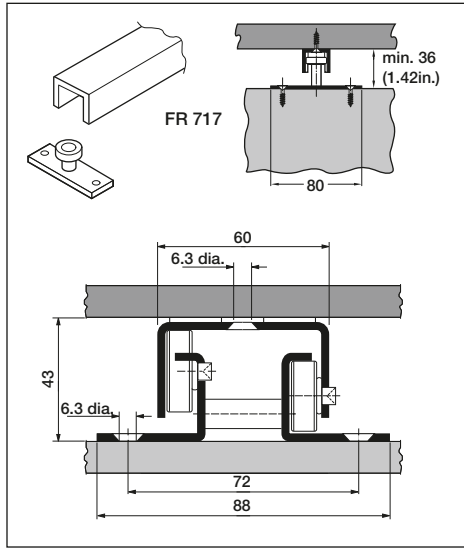
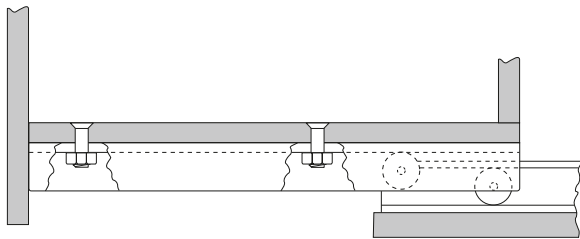


Mounting Instructions

FR 506.B, FR 717 Recommended Applications



On taller units it may be necessary to thru-bolt the pull-out to the slide as illustrated below.
Use 1/4-20 flathead bolts and nuts.



For tall pantry pull-outs:

Maximum door height: 1422mm (56 in.)
Maximum width: 350mm (14 in.);

One slide

For base cabinet pull-outs:

Maximum door height: 813mm (32 in.)
Maximum width: 450mm (18 in.);

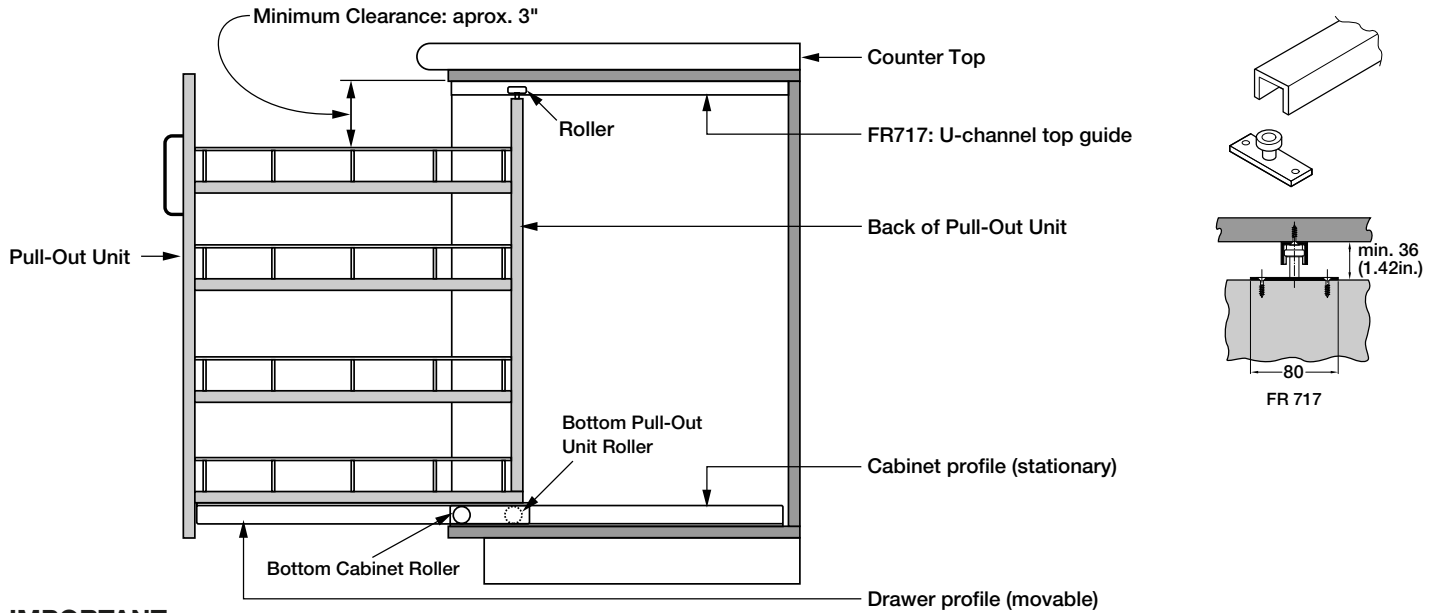
One slide

For units **wider** than 350mm (14 in.):
Two slides

For units **wider** than 450mm (18 in.):
Two slides

Mounting Instructions

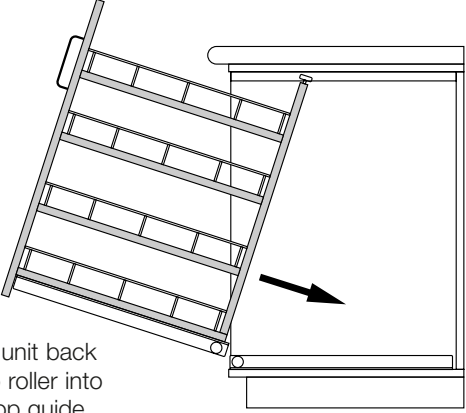
FR 506.B, FR 717

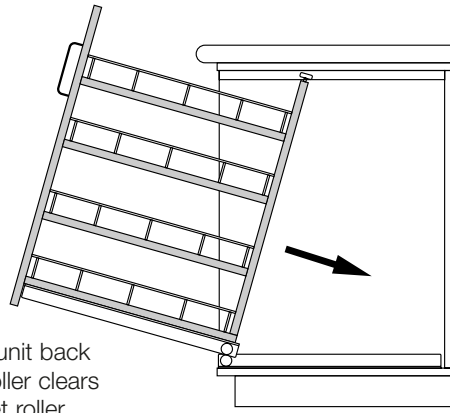


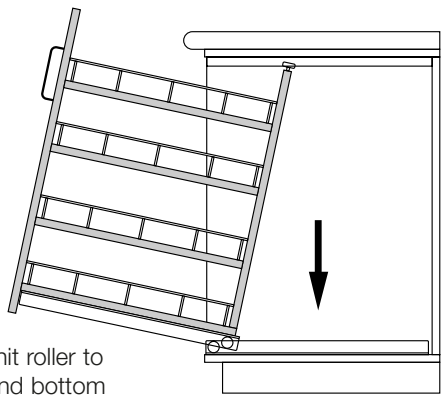
IMPORTANT

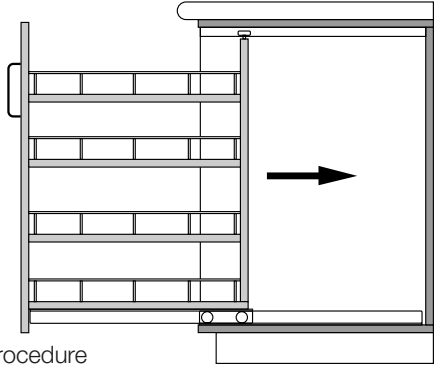
A minimum clearance of approximately 3" is required from the bottom side of top inside cabinet to the top of the pull-out unit. This allows for insertion and removal of the pull-out unit.

Insertion of Pull-Out Unit

- 

1. Lean Pull-out unit back and insert top roller into "U" channel top guide.
- 

2. Lean Pull-out unit back until bottom roller clears bottom cabinet roller.
- 

3. Allow Pull-out unit roller to drop down behind bottom cabinet roller and lean unit forward.
- 

4. Pull-out unit is now installed. Reverse procedure to remove the Pull-out unit.