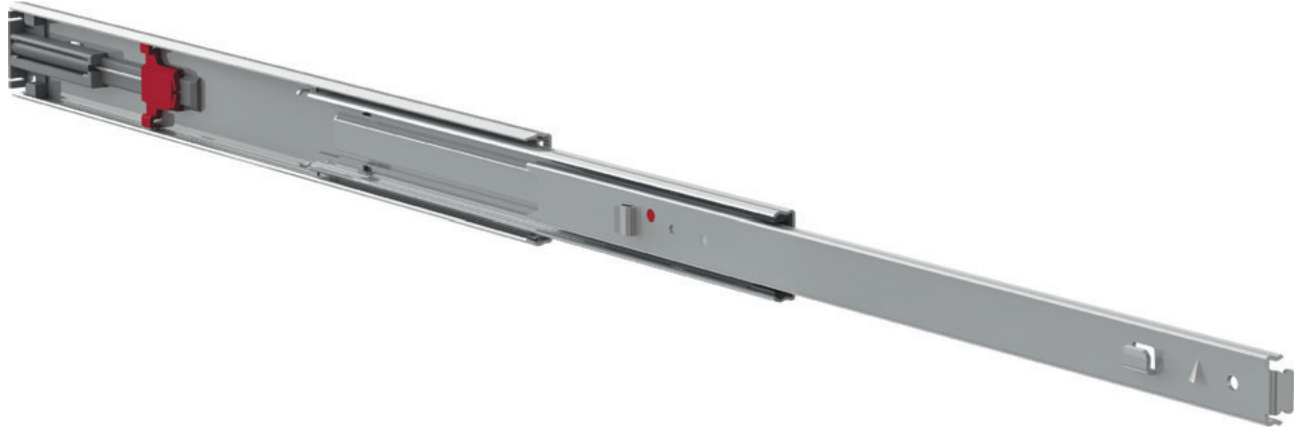


FR 5001 ECD SMT | Full Extension Ball Bearing Slide



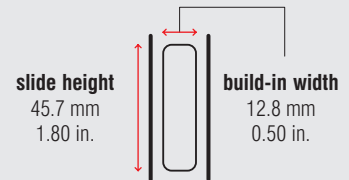
Specifications

-  side mount
-  12.8 mm / 0.50 in.
-  dynamic up to 45 kg / 100 lbs.
-  ball bearing cages
-  steel, zinc plated

Characteristics

- cabinet and drawer profiles with Standard Mounting Tabs (SMT) and lift out prevention
- drawer profile with disconnect release trigger

Dimensions



| Length | | Extension | | Weight | | Item No. | Item No. |
|--------|-------|-----------|-------|---------|------|--------------------------------|--------------------------------|
| | | | | per set | | 1.5 mm / 16 ga. zinc plated | 0.9 mm / 20 ga. zinc plated |
| mm | inch | mm | inch | kg | lbs. | | |
| 300 | 11.81 | 245 | 9.65 | * | * | 400630 | * |
| 355 | 13.98 | 350 | 13.78 | * | * | 400631 | * |
| 405 | 15.95 | 400 | 15.75 | * | * | 400632 | * |
| 450 | 17.72 | 450 | 17.72 | * | * | 400633 | * |
| 500 | 19.69 | 500 | 19.69 | * | * | 400634 | * |
| 550 | 21.65 | 550 | 21.65 | * | * | 400635 | * |
| 600 | 23.62 | 600 | 23.62 | * | * | 400636 | * |
| 650 | 25.59 | 650 | 25.59 | * | * | 400637 | * |
| 700 | 27.56 | 700 | 27.56 | * | * | 400638 | * |

Packing Unit – Sets per Box, all Lengths: 10

* on request