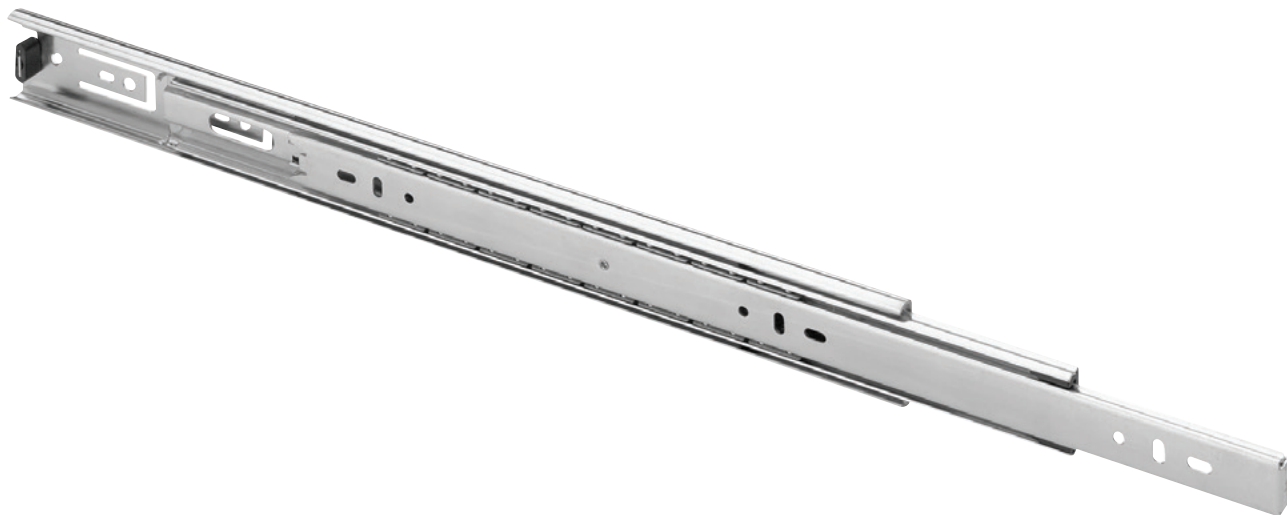







# FR 5000 US | Full Extension Ball Bearing Slide



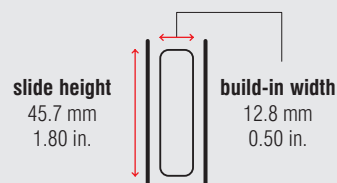
## Specifications

-  side mount
-  12.8 mm / 0.50 in.
-  dynamic up to 45 kg / 100 lbs.
-  ball bearing cages
-  steel, zinc plated or electrolytic coated

## Characteristics

- pitch 32 mm (1.26 in.) compatible hole locations
- drawer profile with disconnect release trigger
- symmetrical design
- with hold close detent
- compatible with regular extension drawer slide FR 5005
- various brackets are available for this drawer slide

## Dimensions



Length		Extension		Weight		Item No.	Item No.
mm	inch	mm	inch	kg	lbs.	zinc plated	black
150	5.91	150	5.91	*	*	400014	*
200	7.87	200	7.87	*	*	400015	*
250	9.84	250	9.84	*	*	400020	400019
300	11.81	308	11.81	*	*	400022	400018
350	13.78	350	13.78	*	*	400023	400040
400	15.75	400	15.75	*	*	400024	600041
450	17.72	450	17.72	*	*	400021	400042
500	19.69	500	19.69	*	*	400025	400043
550	21.65	550	21.65	*	*	400026	400044
600	23.62	600	23.62	*	*	400027	600045
650	25.59	650	25.59	*	*	400033	*
700	27.56	700	27.56	*	*	400034	*
750	29.53	750	29.53	*	*	*	*

Packing Unit – Sets per Box: from 150 to 200 mm: 20 | from 250 to 750 mm: 10

\* on request