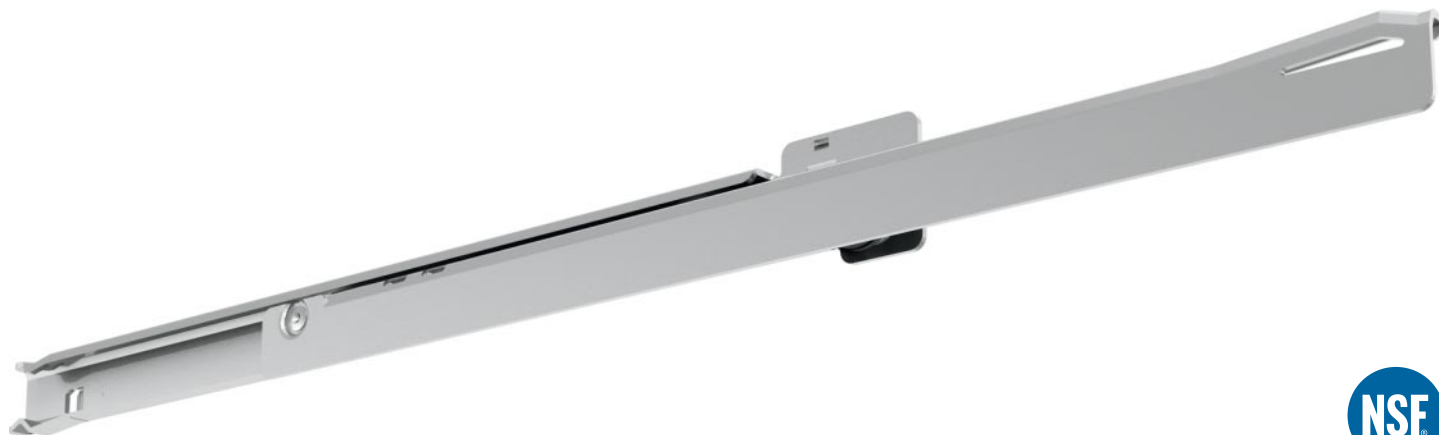


# FR 1052.CS.S

<b>SLIDE TYPE:</b>	Regular-Extension Drawer slide
<b>MOUNTING:</b>	Side Mount

<b>WIDTH:</b>	18 mm (0.71 in.)
<b>LOAD CAPACITY:</b>	dynamic up to 55 kg (125 lbs.)



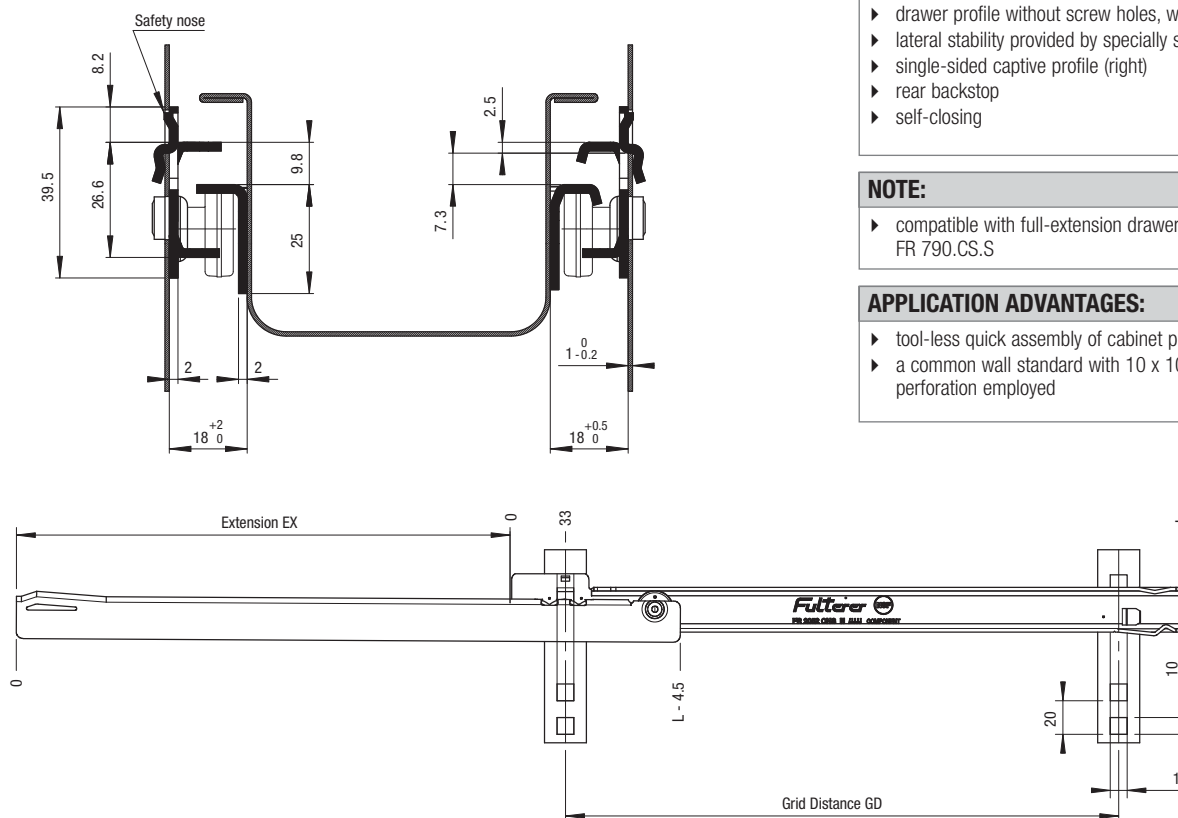
<b>MATERIAL:</b>	stainless steel
------------------	-----------------

<b>FEATURES:</b>	silent rollers
------------------	----------------

<b>SPECIFICATIONS:</b>	<ul style="list-style-type: none"> <li>▶ cabinet profile with bayonet mounting tabs and safety nose</li> <li>▶ drawer profile without screw holes, welding only</li> <li>▶ lateral stability provided by specially shaped profiles</li> <li>▶ single-sided captive profile (right)</li> <li>▶ rear backstop</li> <li>▶ self-closing</li> </ul>
------------------------	--

<b>NOTE:</b>	▶ compatible with full-extension drawer slide FR 790.CS.S
--------------	---

<b>APPLICATION ADVANTAGES:</b>	<ul style="list-style-type: none"> <li>▶ tool-less quick assembly of cabinet profile</li> <li>▶ a common wall standard with 10 x 10 mm square perforation employed</li> </ul>
--------------------------------	---



Length L		EX		GD		Weight per pair	Order No.
mm	in	mm	in	mm	in		
350	13.78	244	9.61	279.5	11.00	*	*
400	15.75	294	11.57	329.5	12.97	*	*
450	17.72	344	13.54	379.5	14.94	*	*
500	19.69	394	15.51	429.5	16.91	*	*
550	21.65	424	16.69	479.5	18.88	*	*
600	23.62	474	18.66	529.5	20.85	*	*
650	25.59	524	20.63	579.5	22.81	*	*
700	27.56	574	22.60	629.5	24.78	*	*
750	29.53	624	24.57	679.5	26.75	*	*

Packing Unit: on request

\* on request